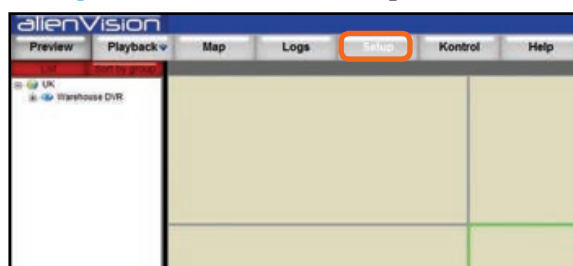


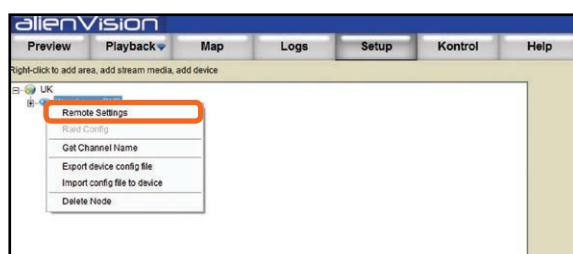
Question: How Do I Setup Motion Detection Using AlienVision?

Answer: It's really easy to remotely setup your DVR to record on motion detection using the AlienVision client software; just follow the simple steps below...

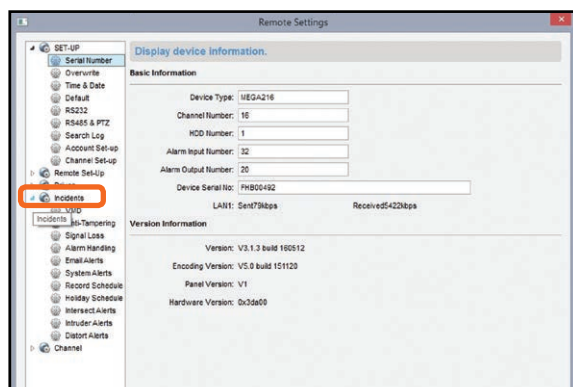
Step 1: Go to set up



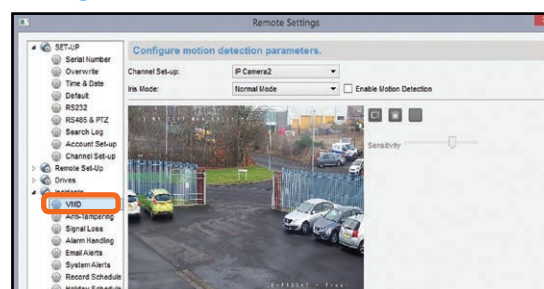
Step 2: Right click on your DVR, then select Remote Settings



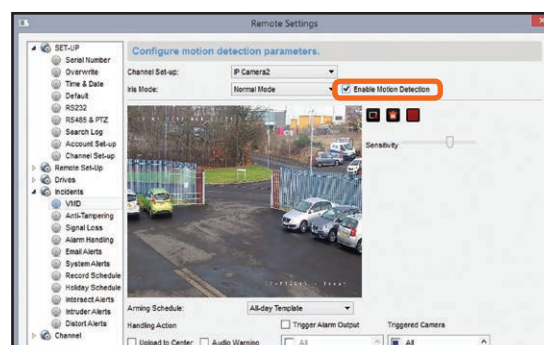
Step 3: Go to Incidents



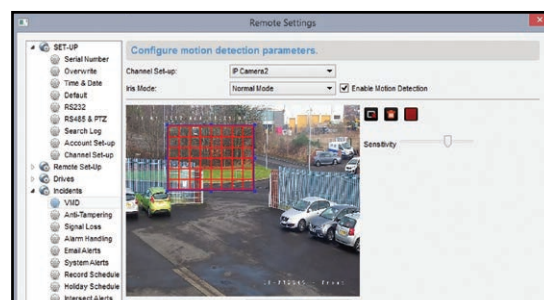
Step 4: Then VMD



Step 5: Enable motion detection



Step 6: Drag and Drop the Area for motion detection



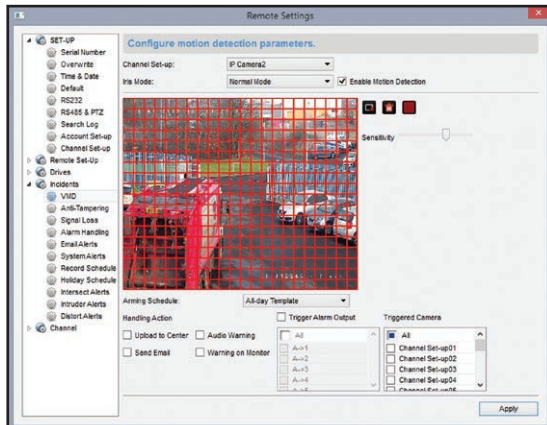


How to FIT CCTV

Tip No:

390

Step 7: Or you can select the whole image for motion detection



Step 8: Then Select Apply

